

# 2730

LOKER AVENUE  
CARLSBAD, CA 92010



**SELINA SOUNAKHENE**  
Associate | CalDRE Lic. #02105358  
719.650.5477 | [selina@lee-associates.com](mailto:selina@lee-associates.com)

**JAMES BENGALA**  
Senior Associate | CalDRE Lic. #01950077  
760.208.8798 | [jbengala@lee-associates.com](mailto:jbengala@lee-associates.com)

**FOR SUBLEASE**

**5,500 – 8,000 SF FLEX/OFFICE SPACE**

1902 Wright Place, Suite 180, Carlsbad, CA 92008 | P. 760.929.9700 | [lee-associates.com](http://lee-associates.com)



[WWW.COREOFFICEGROUP.COM](http://WWW.COREOFFICEGROUP.COM)



## HIGHLIGHTS



5,500 - 8,000 SF  
office



Flexible  
floor plan



Suite consists of one  
restroom, break room/  
kitchenette, 9 private  
offices, open bullpen,  
conference rooms and  
small warehouse

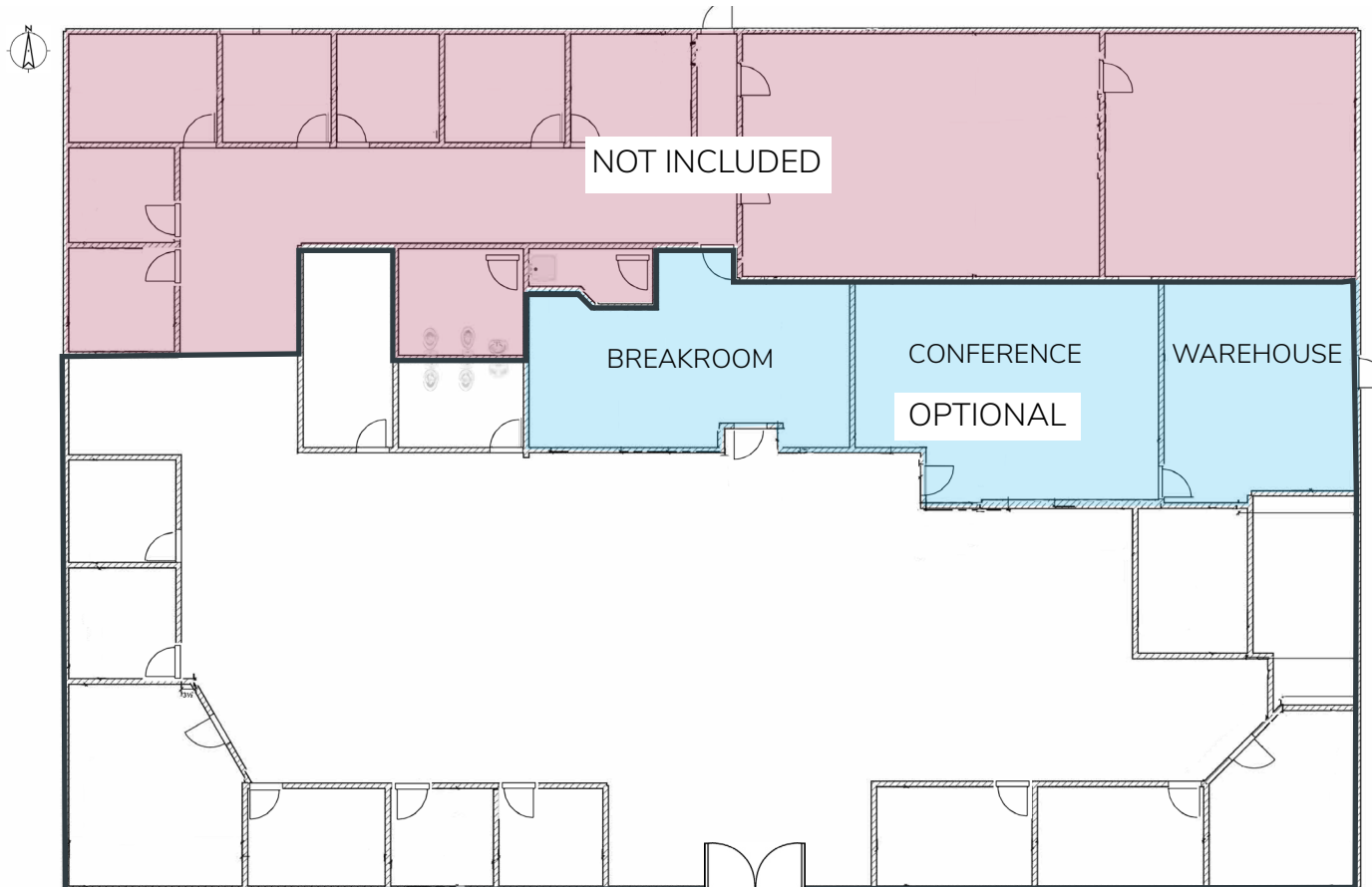


Extensive  
glass line



Sublease through  
December 31,  
2023

## FLOOR PLAN



LEASE RATE:  
\$1.00 SF +  
UTILITIES

All information furnished regarding property for sale, rental or financing is from sources deemed reliable, but no warranty or representation is made to the accuracy thereof and same is submitted to errors, omissions, change of price, rental or other conditions prior to sale, lease or financing or withdrawal without notice. No liability of any kind is to be imposed on the broker herein.



## NEARBY RETAIL & AMENITIES

### 1 the island at carlsbad



### 2 palomar commons



### 3 vista palomar park



1

### 6 grand plaza



6

### 4 bressi ranch village center



### 3 the square @ bressi ranch



2730 LOKER AVENUE  
CARLSBAD, CA 92010

ST. MARK  
GOLF CLUB

LAKE SAN  
MARCOS



# 2730

## LOKER AVENUE CARLSBAD, CA 92010



**LEE & ASSOCIATES**  
COMMERCIAL REAL ESTATE SERVICES

 **CORE Office Group**

All information furnished regarding property for sale, rental or financing is from sources deemed reliable, but no warranty or representation is made to the accuracy thereof and same is submitted to errors, omissions, change of price, rental or other conditions prior to sale, lease or financing or withdrawal without notice. No liability of any kind is to be imposed on the broker herein.

### FOR SUBLEASE

### 5,500 – 8,000 SF FLEX/OFFICE SPACE

1902 Wright Place, Suite 180, Carlsbad, CA 92008 | P. 760.929.9700 | [lee-associates.com](http://lee-associates.com)



[WWW.COREOFFICEGROUP.COM](http://WWW.COREOFFICEGROUP.COM)

**SELINA SOUNAKHENE**  
Associate | CalDRE Lic. #02105358  
719.650.5477 | [selina@lee-associates.com](mailto:selina@lee-associates.com)

**JAMES BENGALA**  
Senior Associate | CalDRE Lic. #01950077  
760.208.8798 | [jbengala@lee-associates.com](mailto:jbengala@lee-associates.com)